

# Connecting to Our Printer

1

Go to the below link on your computer:

<https://tinyurl.com/kwlanprint>

2

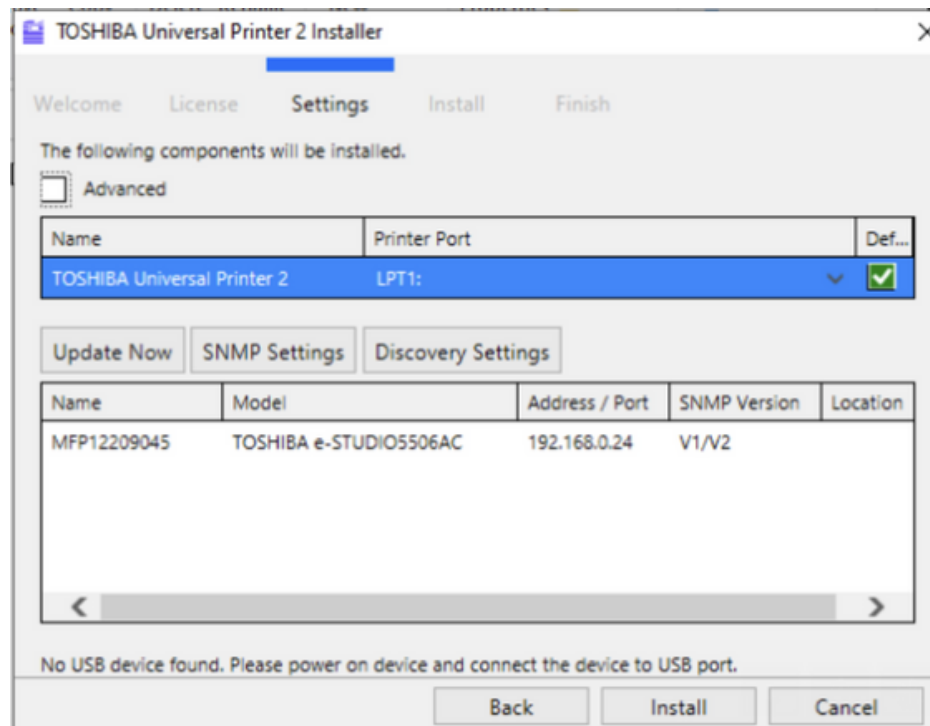
Search the model of our printer (4505AC) and click on "Search for Model."

3

Scroll down on the next page to the E-Bridge Full Installer .EXE. Download it!

4

Once the installer is downloaded, right click the file and hit "run as admin". Follow the installer prompts.



5

When it gets to the above page, click on the Toshiba Name in the lower box and then click "install"!

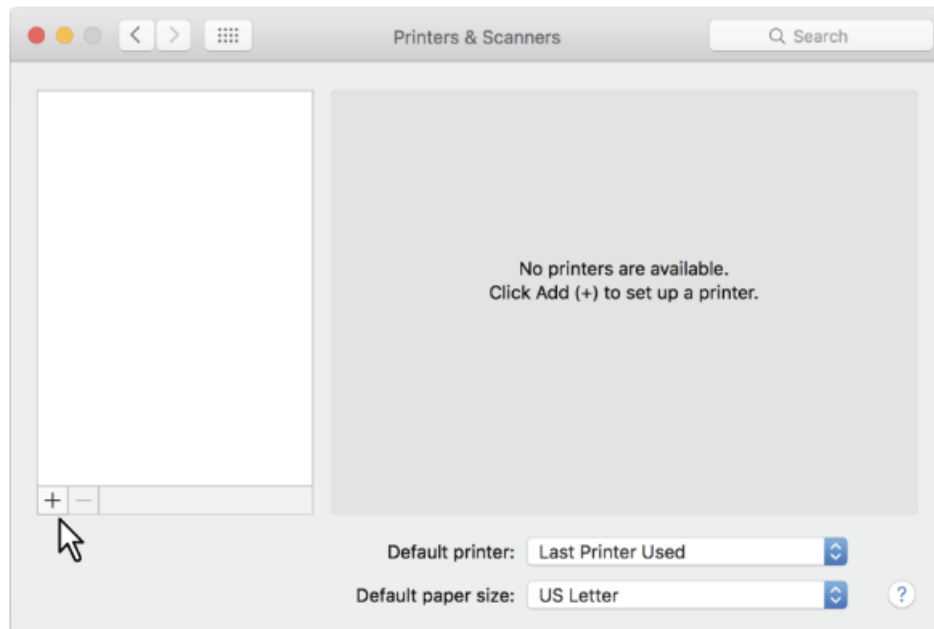
6

Once you install it, try printing a test page to make sure that you are connected. To print from here on out, please use your KW assigned print code prompted in a dialogue box on your screen each time you print something!

# Connecting to Our Printer ON MAC

1

Open System Preferences and then click Printers & Scanners, then hit the “+” button.



2

Select our printer “Toshiba e-studio” or “Premium Mortgage Color” and add it to your list of printers.

## To Print:

1

Go through the Print dialogue on your Mac as per usual.

2

Walk to the printer and hit the “Print” option on the touch screen, then sign in with your printer code.

3

Hit the drop down printer option menu and select “Invalid” jobs. Then scroll through the list to find your document. Select your document, then hit print in the bottom right hand corner of the screen.